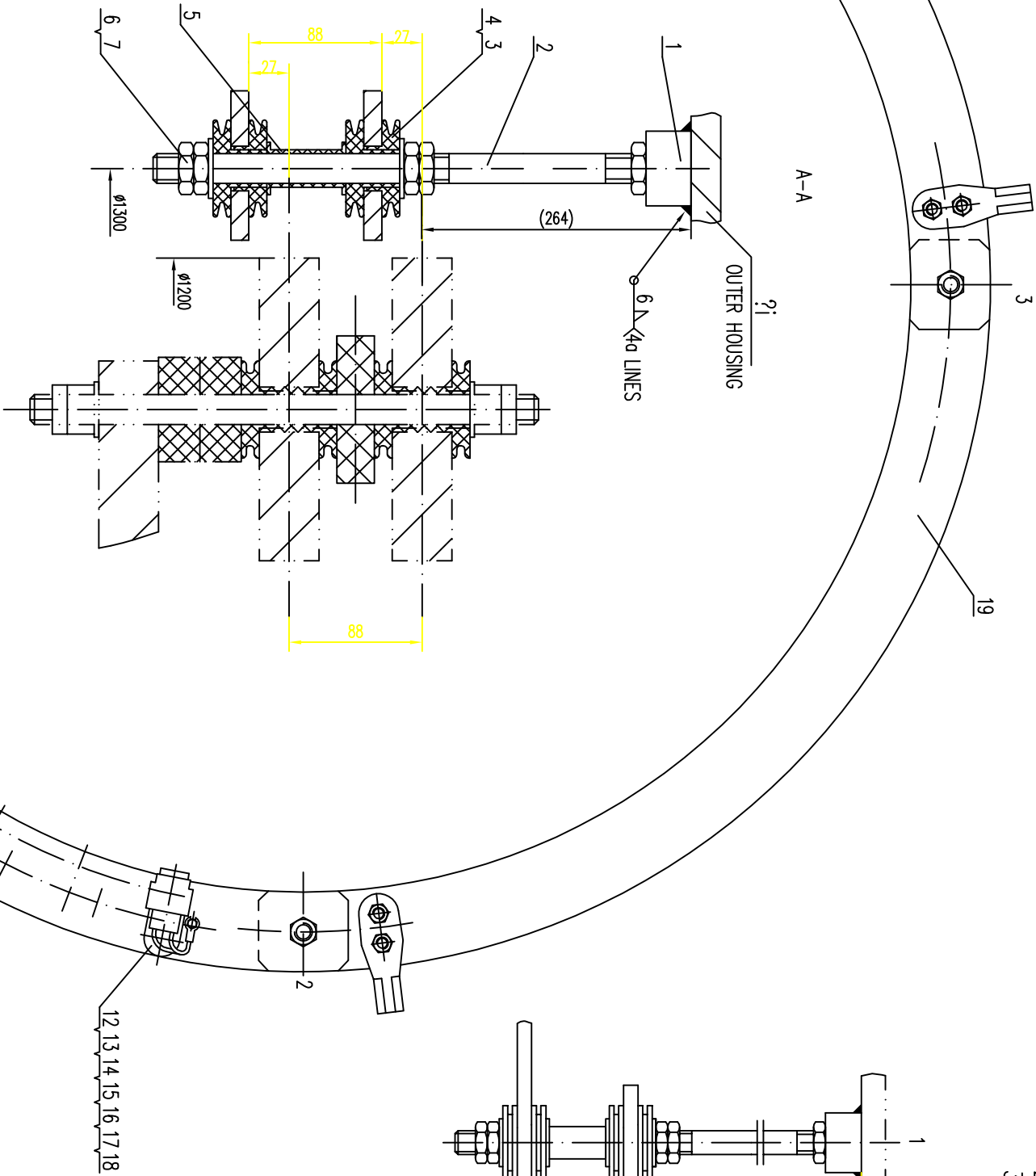
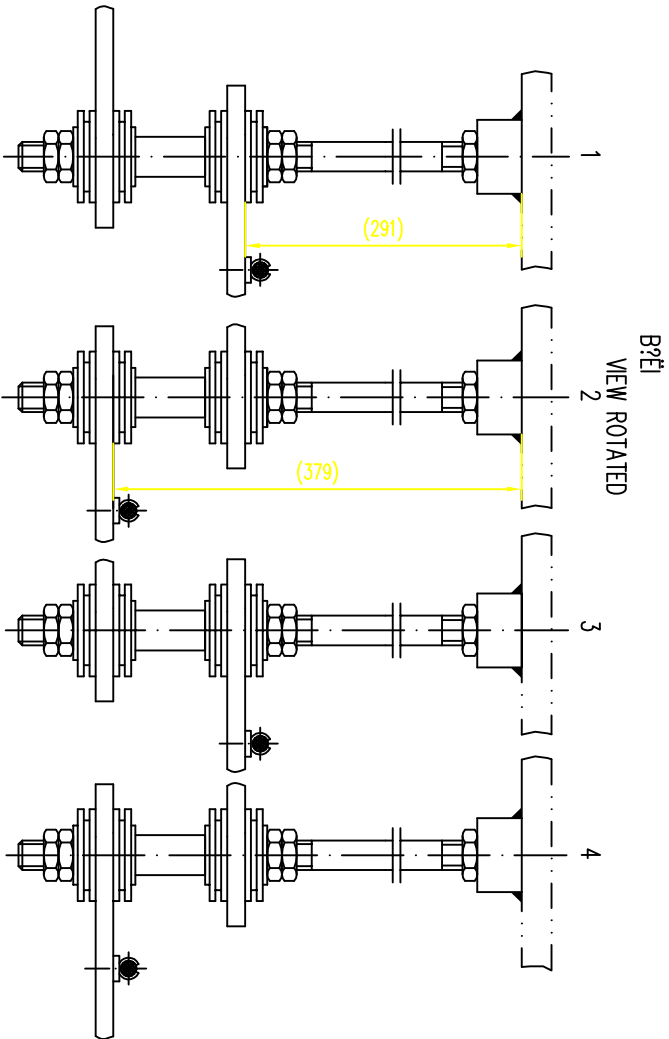


NOTES
 1. AFTER ASSEMBLED AT SITE, INSULATING RESISTANCE SHALL NOT BE LESS THAN
 2. RATED EXCITATION VOLTAGE IS 230 V.



| | | | | |
|----|-----------|---------------------|----|--------|
| 19 | 3F14321 | CONDUCTING RING | 4 | 8 |
| 18 | GB/T197.1 | U < ? 6 | 32 | 0.0015 |
| 17 | GB/T5783 | U * ? M6X20 | 32 | 0.0068 |
| 16 | 4B5399 | COPPER BOLTS | 32 | 0.031 |
| 15 | 4B4623 | LOCKED WASHER | 32 | 0.0025 |
| 14 | GB/T5783 | * ? M6X25 | 64 | 0.0074 |
| 13 | 4B6625 | BOLTS | 32 | 0.064 |
| 12 | 4B2873 | 5 7 Ncc 634 | 32 | 0.064 |
| 11 | 4B4452 | BRUSH | 32 | 0.273 |
| 10 | GB/T6170 | 7 6 H712-2-25x32x60 | 8 | 0.0108 |
| 9 | GB/T5783 | b? < ? 20 | 8 | 0.0195 |
| 8 | 4F12964 | LOCKED WASHER | 8 | 0.0195 |
| 7 | GB/T197.1 | * I M12 | 8 | 0.04 |
| 6 | GB/T6172 | NUTS | 8 | 0.04 |
| 5 | | * ? M12X35 | 16 | 0.017 |
| 4 | 4B5429 | TERMINAL WASHER | 20 | 0.034 |
| 3 | 4B5427 | * 4 | 4 | 0.32 |
| 2 | 4F14014 | GB/T197.1 | 16 | 0.017 |
| 1 | 4F5261 | WASHER | 20 | 0.034 |
| | | * I M20 | 4 | 0.059 |
| | | φ25X2?0φ10?52 | 8 | 0.05 |
| | | STEEL RING | 8 | 0.05 |
| | | INSULATION WASHER | 8 | 0.05 |
| | | Y ? ? | 4 | 1 |
| | | INSULATION WASHER | 4 | 0.65 |
| | | * F | 4 | 0.65 |
| | | BOLTS | 4 | 0.65 |
| | | - W | 4 | 0.65 |
| | | BLOCK | 4 | 0.65 |